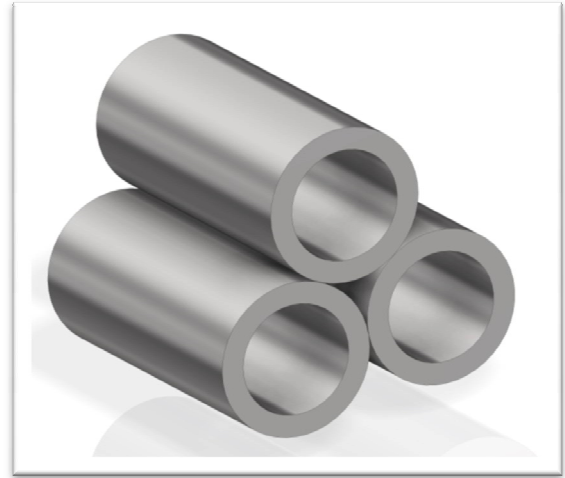
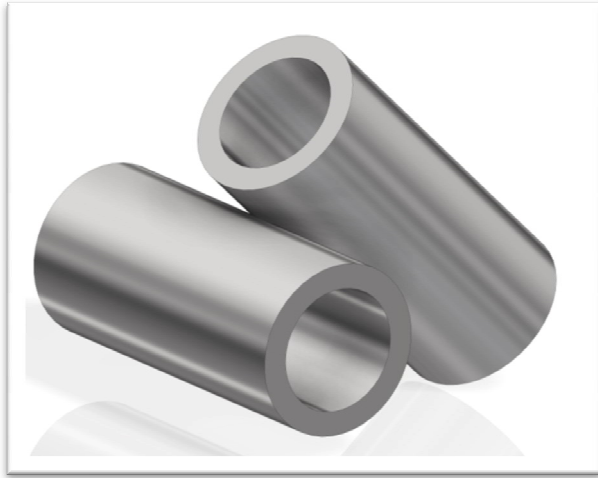


Hollow Cathodes



Hollow Cathodes are crucial components in satellite communication systems, specifically within electric propulsion thrusters like Hall thrusters and ion thrusters.

Hollow Cathode act as the electron source emit electrons, which are used to ionize the propellant gas (often xenon) inside the thruster and neutralizing the ion beam expelled by the thruster.

The resulting ions are then accelerated by electric fields, generating thrust enabling satellites to maneuver in orbit and maintain their desired positions.

Hollow cathodes are essential for the efficient and reliable operation of electric propulsion systems, which offer advantages like higher specific impulse (fuel efficiency) and longer operational lifetimes compared to traditional chemical propulsion systems.



Glowtronics Pvt Ltd

1D, Hootagalli Industrial Area,

Mysore – 570 018, India Tel: +91-821-240-2461/2462

Email: marketing@glowtronics.com Website: www.glowtronics.com



intertek intertek

GPL-MKT-PL-HOC-JUN-25